

# e-TRIM

Burner Management System

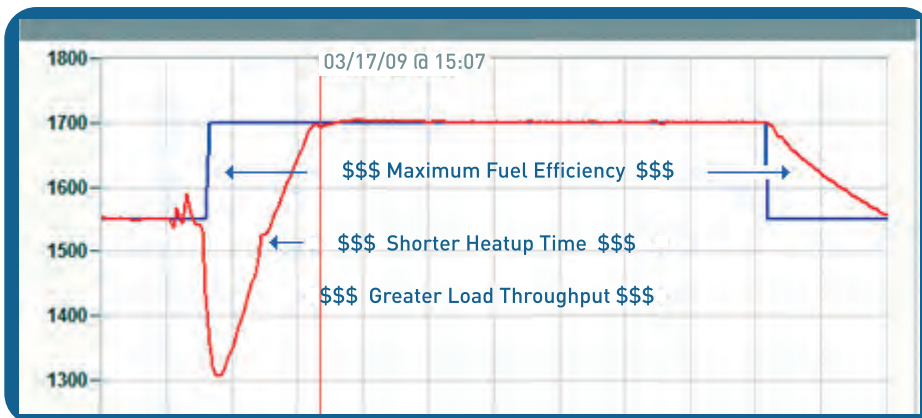
## Air / Fuel Ratio Monitoring System

Managing Excess Air - What's right for your application?



- 3.5" Color Touch-Screen Display
- Data Logging to Flash Memory
- Burner "Out of Tune" Alarm
- ETHERNET
- Multi-Sensor Inputs
- Digital Input for High-Fire Notification
- Burner Status Indication available remotely via Web-Browser
- Burner "Not Lit" Alarm

Checking and tuning air/fuel ratios is one of the simplest ways to get maximum efficiency out of fossil fuel fired process heat equipment.



- Increased burner efficiency
- Faster ramp to heat
- Less fuel per LOAD
- Maximizes throughput
- Reduce NOx & CO<sub>2</sub>
- Increase radiant-tube life

According to DOE studies - minimizing combustion air can deliver 35% savings

# e-TRIM

engineered for air/fuel ratio monitoring

## Excess air dilutes combustion

- Lowers flame temperature
- Less heat for the load
- More heat in the exhaust gasses
- Increase NO<sub>x</sub>

## Optimum excess air for energy efficiency and pollution prevention:

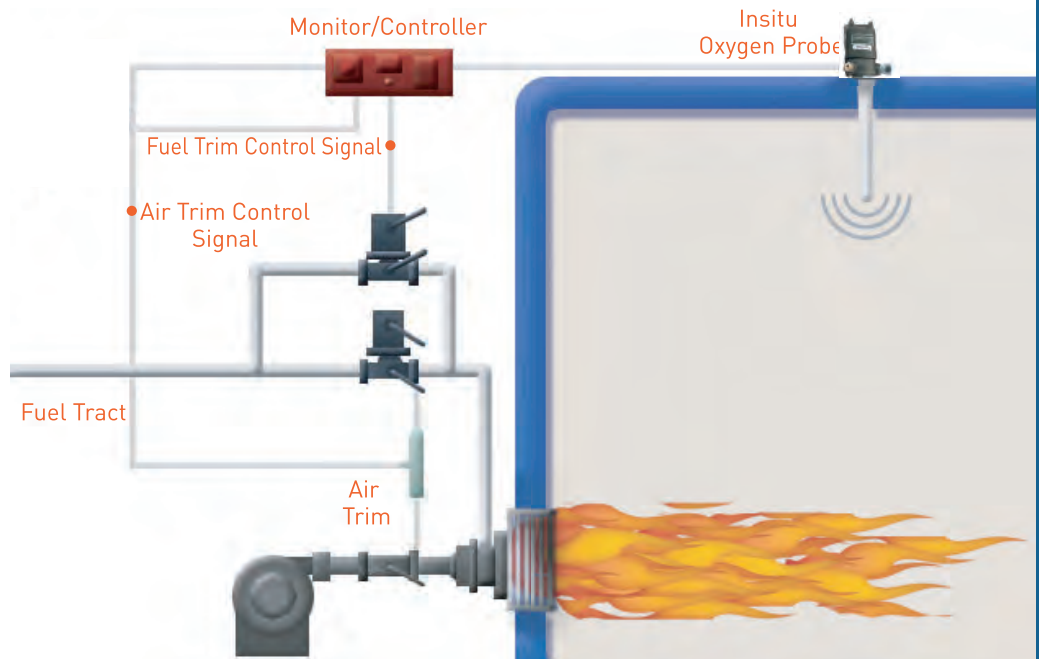
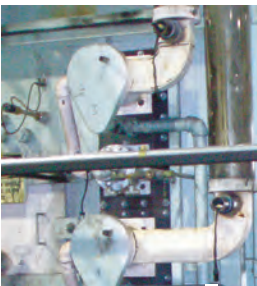
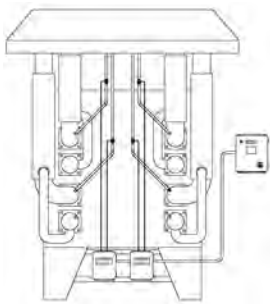
10% excess air - yields 2% excess O<sub>2</sub> in combustion gasses

## Excess gas

- Sooting in radiant tubes
- Lower flame temperature
- Unburned fuel
- Dangerous gas emissions (higher CO)

## Other benefits

- Process repeatability
- Maximum throughput
- Even distribution of heat
- Longer radiant tube life



SuperSystems  
incorporated

7205 Edington Drive  
Cincinnati, OH 45249  
513.772.0060 phone  
513.772.9466 fax